

## HELP CRITICAL STAGES STAY ON THE ROAD!



Since its formation in 2005, Critical Stages has grown to become one of Australia's leading producers of independent touring theatre. Our brief is to make outstanding theatre accessible to audiences around the country. To achieve this we have been successfully touring to regional, remote, urban and rural audiences in every state and territory around the country for the past ten years. We champion independent theatre artists and companies around the country and assist them in extending the life of their work, and we support regional communities giving them access to high quality theatre that they would otherwise not be able to access. Scores of artists are engaged on Critical Stages touring productions every year, traveling to perform in hundreds of towns from Darwin to Launceston, and Karratha to Lightning Ridge to tens of thousands of audience members every year. In 2016 alone we will be touring at least 8 separate productions reaching, over 60 different towns and cities in every state and territory.



We do this in order to support audiences and artists nationally by:

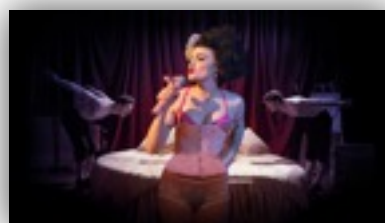
- Increasing access for regional and remote audiences to outstanding high-quality new Australian professional theatre;
- Developing new opportunities for regional artists to engage in unique professional development opportunities with leading arts practitioners;
- Supporting independent artists by brokering meaningful relationships with regional presenters and audiences, and working as partners in touring their productions; and
- Contributing to building a strong and inter-connected, healthy, diverse and vibrant national theatre sector.

### How you can help...

As a small not-for-profit organisation, Critical Stages relies on government support and private donations to keep operating. You can help today simply by making a small **tax-deductible donation to Critical Stages**. Your support will play a crucial roll in allowing us to continue providing audiences right round the country with powerful theatrical experiences long into the future. We have a host of new initiatives and bold plans for the future of Critical Stages, and you can help us to see them grow. You can donate easily via PayPal from our website at [www.criticalstages.com.au](http://www.criticalstages.com.au), or use the form overleaf. As a special thank you, as well as our extreme gratitude, you will receive exclusive updates from our cast and crew as they take their shows on the road as well as acknowledgement on the digital donor wall on our website.

Thank you for your support and we look forward to seeing you at the theatre again very soon.

With best wishes,





**Chris Bendall, Chief Executive Officer**



**I/we wish to make a tax deductible donation to the Critical Stages Public Fund.**

\$5000    \$1000    \$500    \$250    Other \$ \_\_\_\_\_

Name \_\_\_\_\_

Address \_\_\_\_\_

State \_\_\_\_\_ Postcode \_\_\_\_\_ Phone \_\_\_\_\_

Email \_\_\_\_\_

I/we would prefer my/our donation to remain anonymous

I/we would like my/our donation acknowledged on Critical Stages website and programmes as follows (\$250 or more): \_\_\_\_\_

**Donation payment method:**  cheque /  money order /  credit card

Please make cheques and money orders payable to **Critical Stages Public Fund**

**Credit card donation\***

Type of card:  Mastercard /  Visa /  American Express

Name on card \_\_\_\_\_

Number on card \_\_\_\_\_

Card expiry date \_\_\_\_\_ / \_\_\_\_\_

Signature \_\_\_\_\_

If you wish to donate by direct bank transfer or consider making a regular monthly or annual donation, please contact Critical Stages on 02 9252 6340 or email [info@criticalstages.com.au](mailto:info@criticalstages.com.au)

This form can be emailed to [info@criticalstages.com.au](mailto:info@criticalstages.com.au) or posted to Level 2, 10 Hickson Rd, The Rocks NSW 2000

The Critical Stages Public Fund is a tax deductible fund listed on the Register of Cultural Organisations under Subdivision 30-B of the *Income Tax Assessment Act 1997*. DONATIONS OF \$2.00 OR MORE ARE TAX DEDUCTIBLE

